

Four Foot Children's Table Assembly

(Instructions for Assembly)

Hardware Supplied: 17 pieces 2 1/2" (# 10) square head stainless steel screw
10 pieces 1 5/8" (# 7) square head stainless steel screw
1 piece # 2 square head driver bit
1 piece # 1 square head driver bit

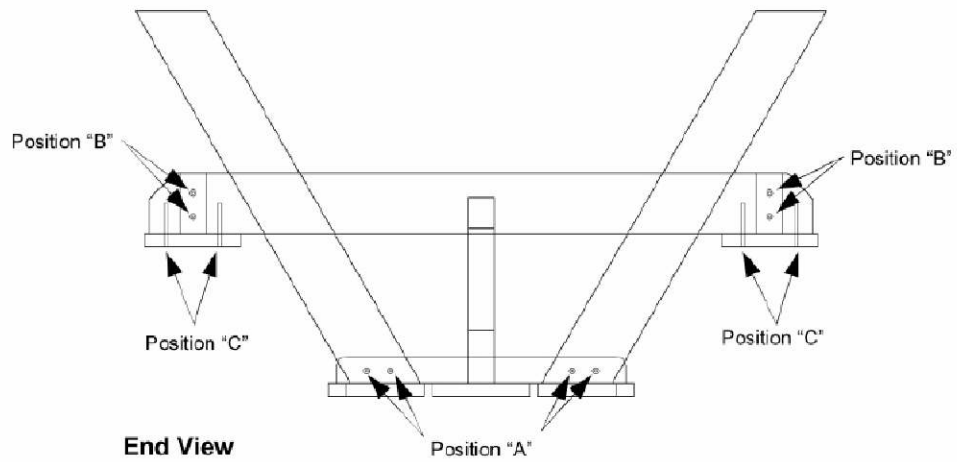
Tools required: Variable speed drill or screw gun

Refer to attached figures 1 through 3.

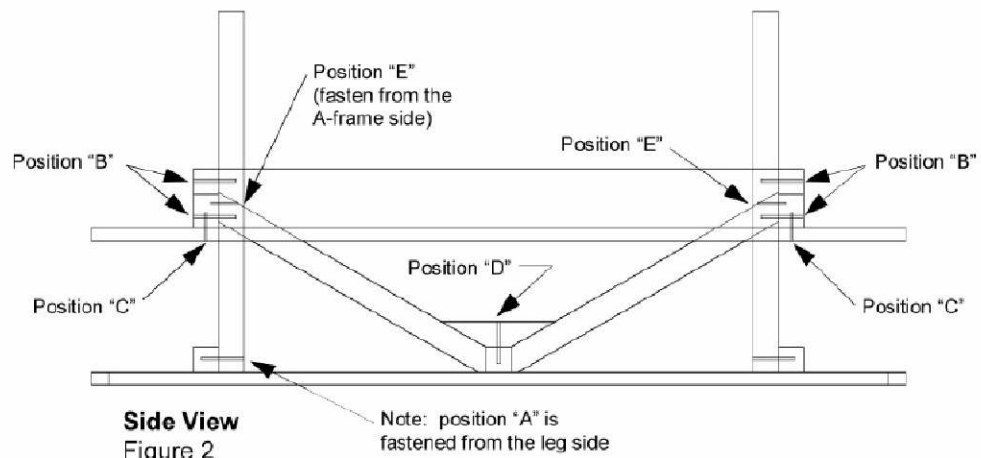
- Lay table top (top side down) on a flat surface.
- Legs are attached to the table top at position "A" in figure (1). Screw (2) 2 1/2" stainless steel screws through the leg into the cross brace for each leg. The table legs go on the inside of the cross braces [see figure (2)]. Observe that the table legs come with the bench supports already attached to them.
- Flip the table over (right side up) and place the benches in between the bench supports as shown. Both benches have an attached brace running underneath the length of the bench. Screw (2) 2 1/2" stainless steel screws through the bench support into the brace underneath each bench at position "B" in figures (1) and (2). This will attach the benches firmly to the legs/bench supports.
- Screw (2) 1 5/8" stainless steel screws through the bench into the bench support at position "C" for each bench end. After all four ends are done, place the table upside down again.
- Place the A-frame brace on the center cross brace of the table top as shown in figure (2). Screw (1) 2 1/2" stainless steel screw through the A-frame into the cross brace at position "D". Then attach each leg of the A-frame to a bench support with (1) 2 1/2" stainless steel screw. Screw through the A-frame into the bench support at position "E", making sure that you screw perpendicular to the bench support surface as shown in figure (2).
- Flip the table over and position where desired. Enjoy

Child's 4 foot Picnic Table

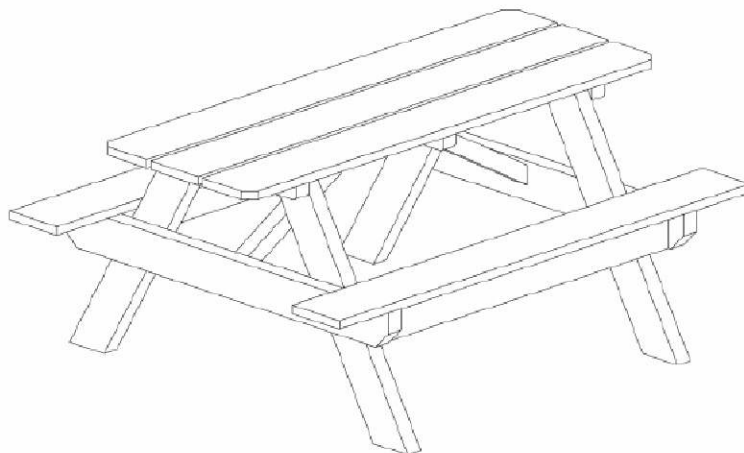
Assembly Instructions



End View
Figure 1



Side View
Figure 2



Assembled View
Figure 3