

1 1/16"ODx 22 13/16"x 14ga (.083") GALV.TUBE

1.66"ODx 120"x 14ga (.083) GALV. TUBE

1.66"ODx 35 3/4"x 14ga (.083") GALV.TUBE

1.66"ODx 120"x 14ga (.083) GALV.TUBE

1.66"ODx 32 3/4"x 14ga (.083") GALV.TUBE

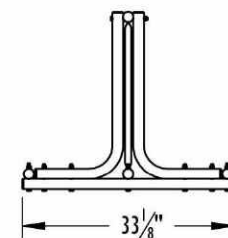
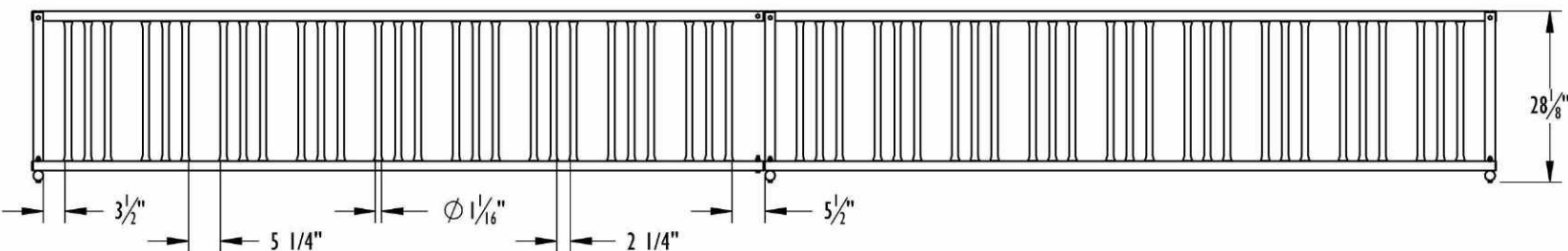
FURNITURE LEISURE INC

OUR LIST OF WEB STORES

www.FurnitureLeisure.com
www.PicnicFurniture.com
www.ParkTables.com

www.PoolFurnitureSupply.com
www.PicnicTableSupplier.com
www.UBrace.com

1.800.213.2401

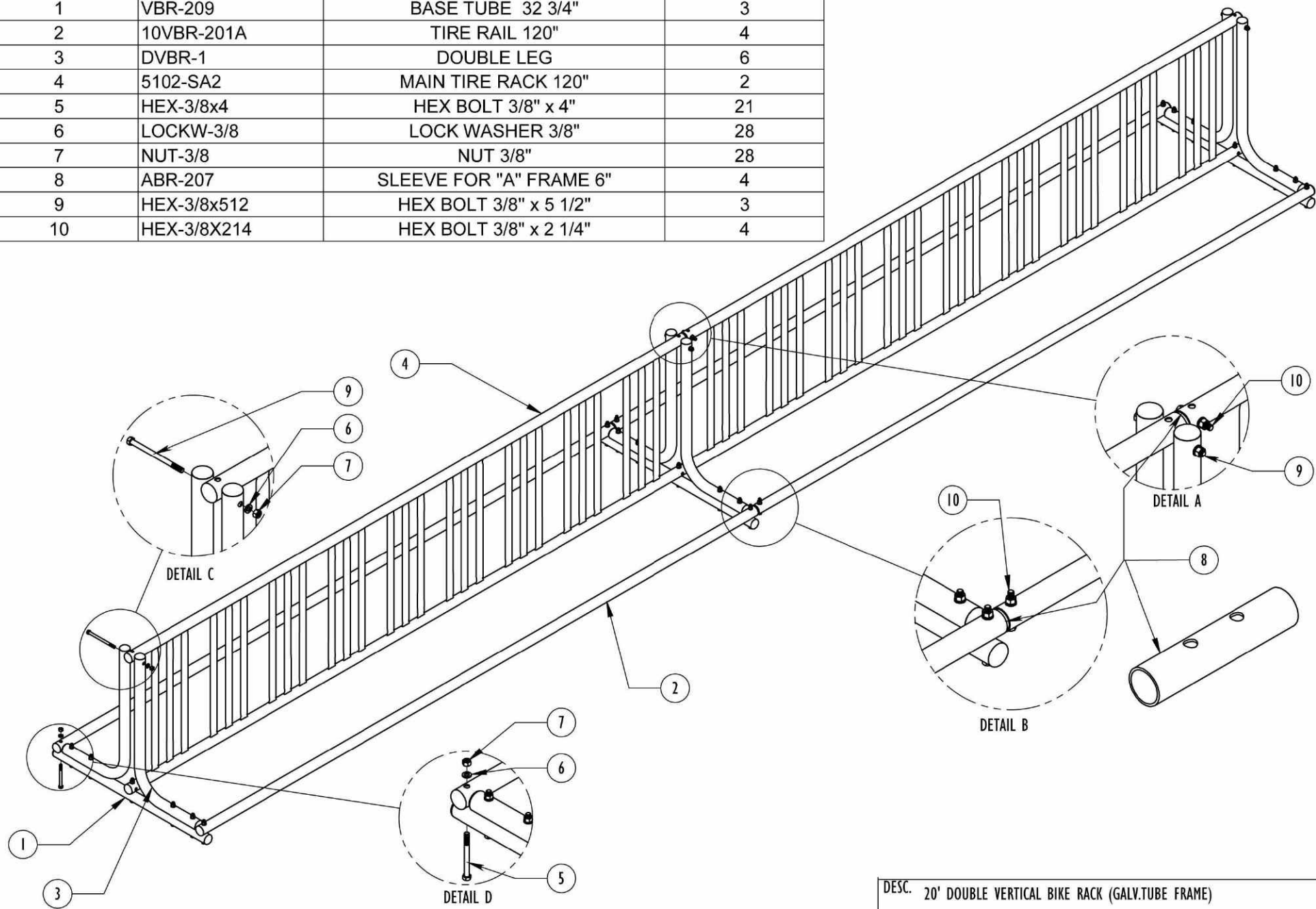


36 SPACES (18 EACH SIDE)
 ALL WELDS ARE CLEANED, COLD GALVANIZED & PAINTED

DESC. 20' DOUBLE VERTICAL BIKE RACK (GALV.TUBE FRAME)			
MODEL NUMBER. 1202			WT. 234 lbs.
DRAWN BY PAVEL	DATE 12/15/2011	Sheet 1 of 1	SCALE NONE

CONFIDENTIAL DRAWING AND INFORMATION IS NOT TO BE COPIED
 OR DISCLOSED TO OTHERS WITHOUT THE CONSENT OF KAY PARK.
 SPECIFICATIONS ARE SUBJECT TO CHANGE WITHOUT NOTICE.

ITEM NO.	PART NUMBER	Description (Spec)	QTY.
1	VBR-209	BASE TUBE 32 3/4"	3
2	10VBR-201A	TIRE RAIL 120"	4
3	DVBR-1	DOUBLE LEG	6
4	5102-SA2	MAIN TIRE RACK 120"	2
5	HEX-3/8x4	HEX BOLT 3/8" x 4"	21
6	LOCKW-3/8	LOCK WASHER 3/8"	28
7	NUT-3/8	NUT 3/8"	28
8	ABR-207	SLEEVE FOR "A" FRAME 6"	4
9	HEX-3/8x512	HEX BOLT 3/8" x 5 1/2"	3
10	HEX-3/8X214	HEX BOLT 3/8" x 2 1/4"	4

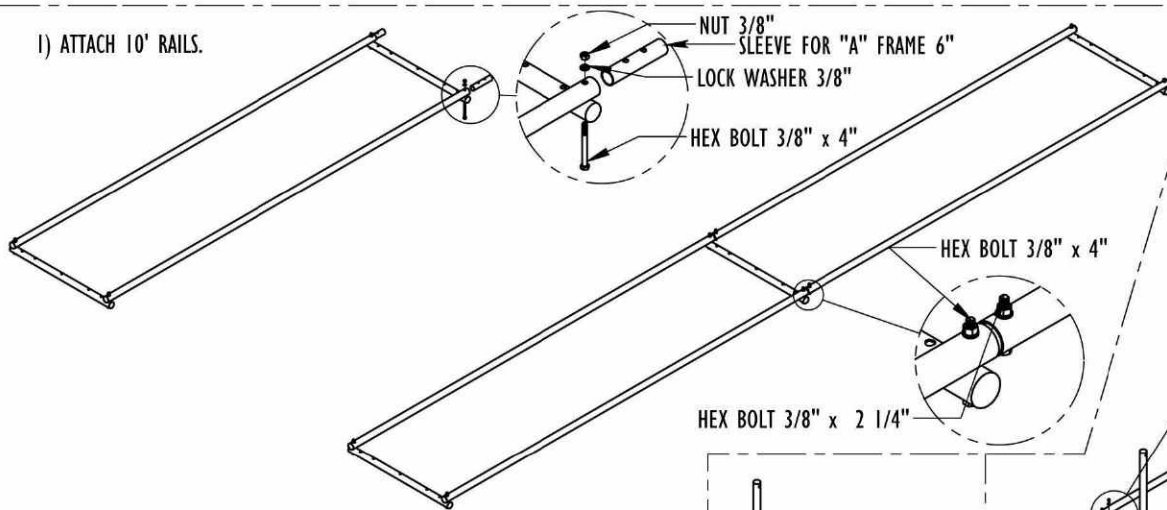


DESC. 20' DOUBLE VERTICAL BIKE RACK (GALV.TUBE FRAME)			
MODEL NUMBER. 1202			WT. 234 lbs.
DRAWN BY PAVEL	DATE 12/15/2011	Sheet 1 of 2	SCALE NONE

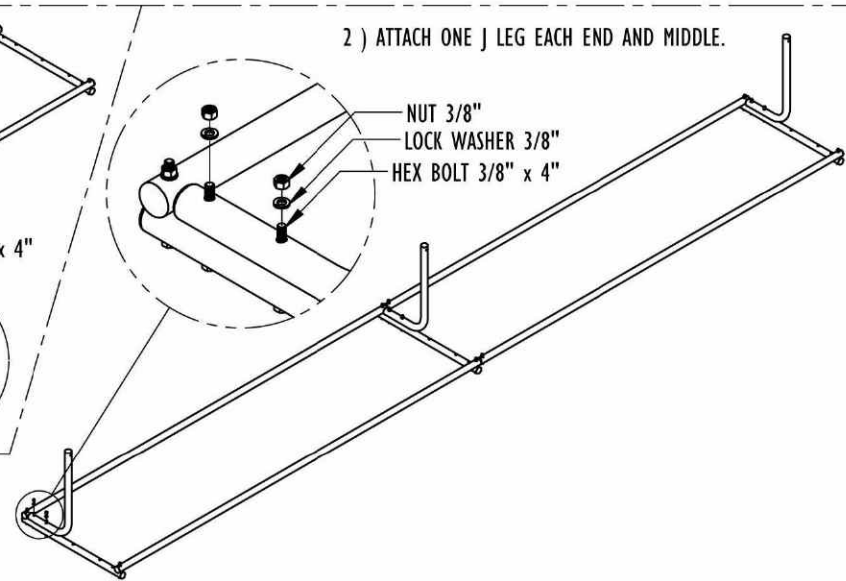
CONFIDENTIAL DRAWING AND INFORMATION IS NOT TO BE COPIED OR DISCLOSED TO OTHERS WITHOUT THE CONSENT OF KAY PARK. SPECIFICATIONS ARE SUBJECT TO CHANGE WITHOUT NOTICE.

IMPORTANT: LEAVE THE NUTS LOOSE UNTIL ALL ARE IN PLACE.

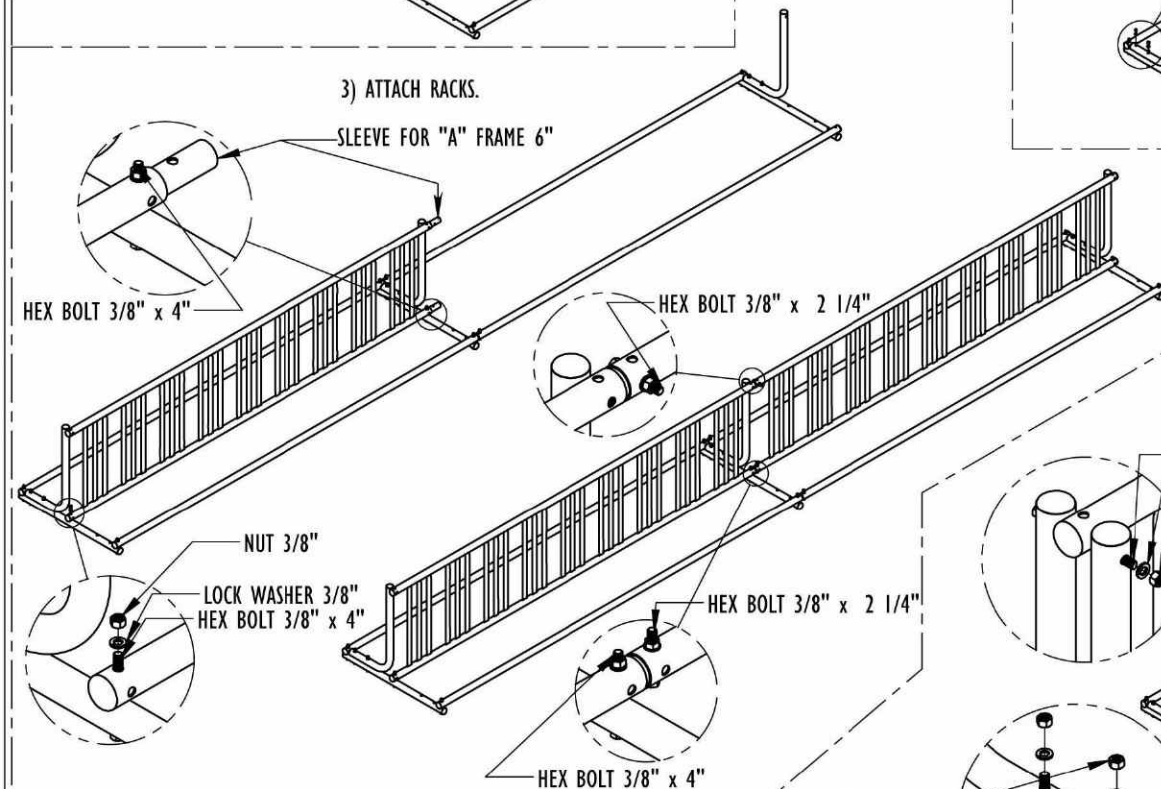
1) ATTACH 10' RAILS.



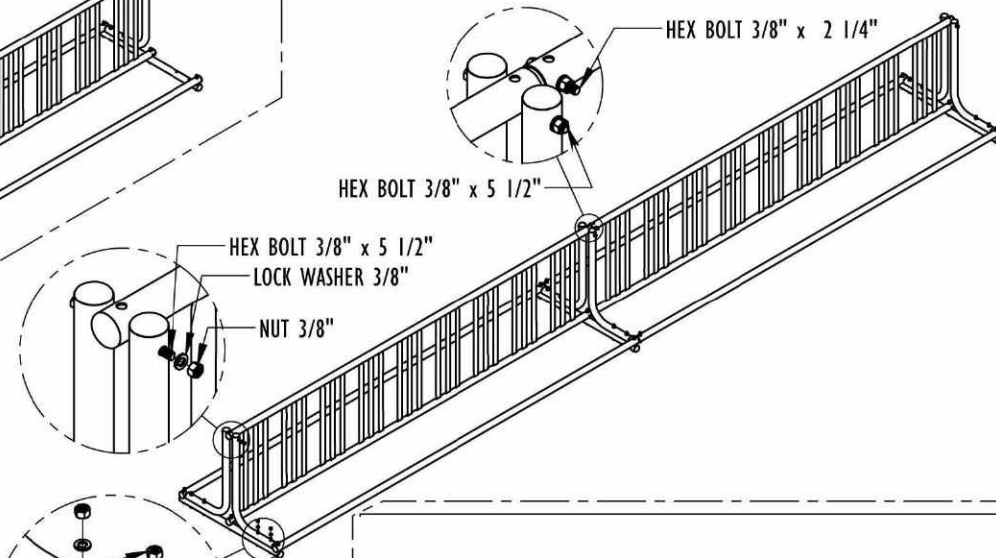
2) ATTACH ONE J LEG EACH END AND MIDDLE.



3) ATTACH RACKS.



4) ATTACH THREE J LEGS AND TOP OF RACK.



DESC. 20' DOUBLE VERTICAL BIKE RACK (GALV.TUBE FRAME)

MODEL NUMBER. 1202

WT. 234 lbs.

DRAWN BY PAVEL

DATE 12/15/2011

Sheet 2 of 2

SCALE NONE

CONFIDENTIAL DRAWING AND INFORMATION IS NOT TO BE COPIED OR DISCLOSED TO OTHERS WITHOUT THE CONSENT OF KAY PARK. SPECIFICATIONS ARE SUBJECT TO CHANGE WITHOUT NOTICE.