

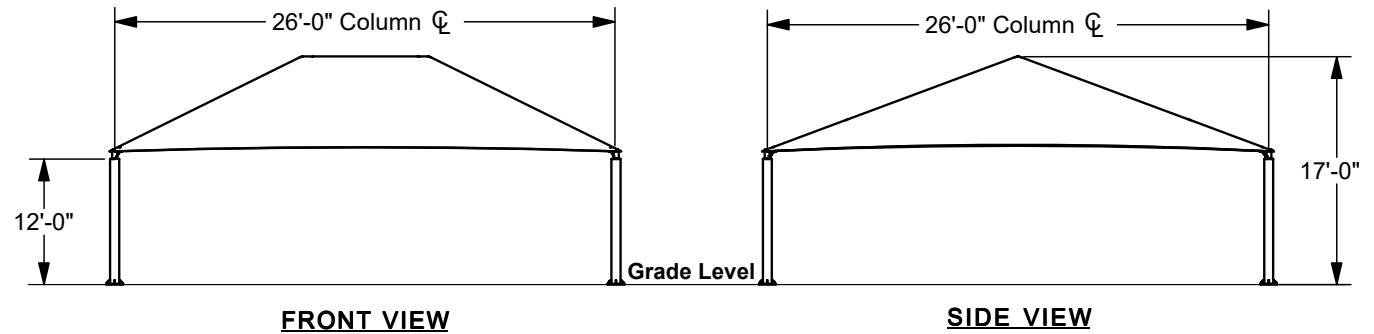
SQUARE HIP SHADE

**26' x 26' x 12'**

MODEL #:

SD262612SG (With Glide Elbows)

SD262612SN (Without Glide Elbows)



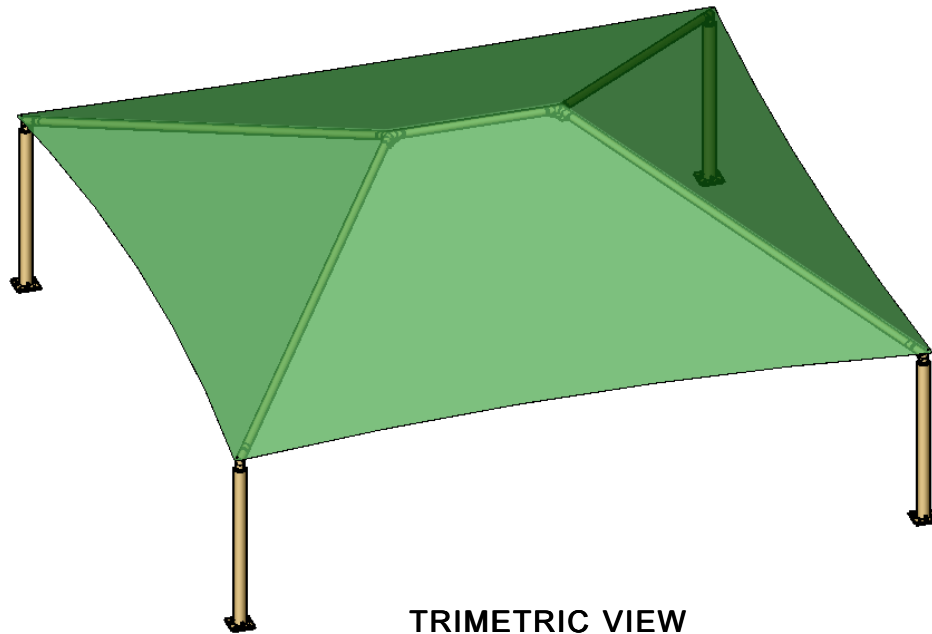
12'-0"

FRONT VIEW

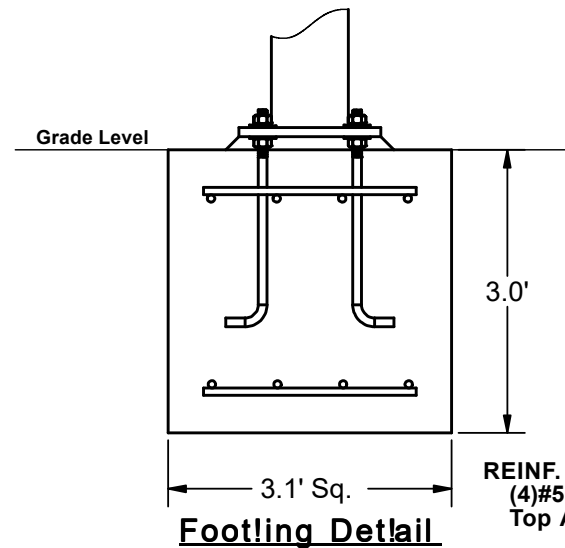
SIDE VIEW

17'-0"

Grade Level



TRIMETRIC VIEW



Footling Detail

REINF.  
(4)#5 EW  
Top And Bottom

\*Footing design based  
on 1500 PSF soil  
bearing pressure.

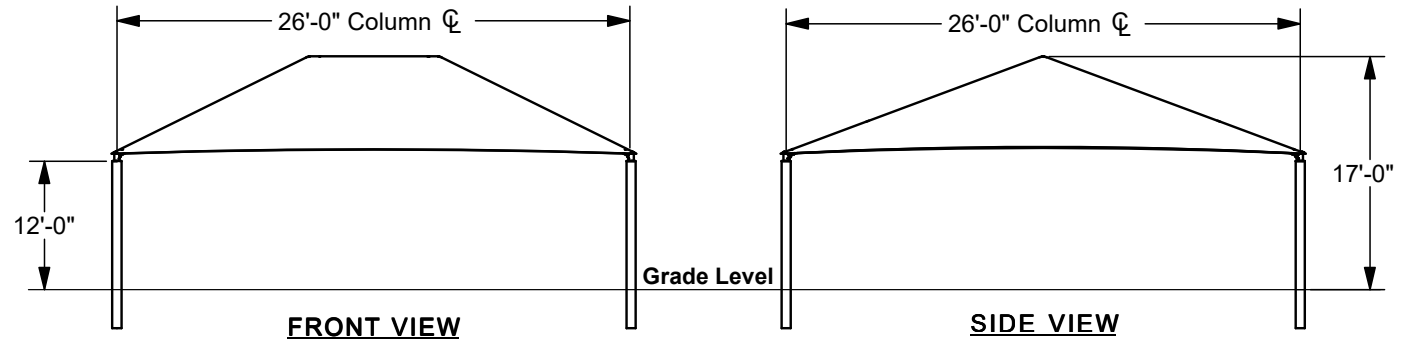
# SQUARE HIP SHADE

## 26' x 26' x 12'

MODEL #:

SD262612IG (With Glide Elbows)

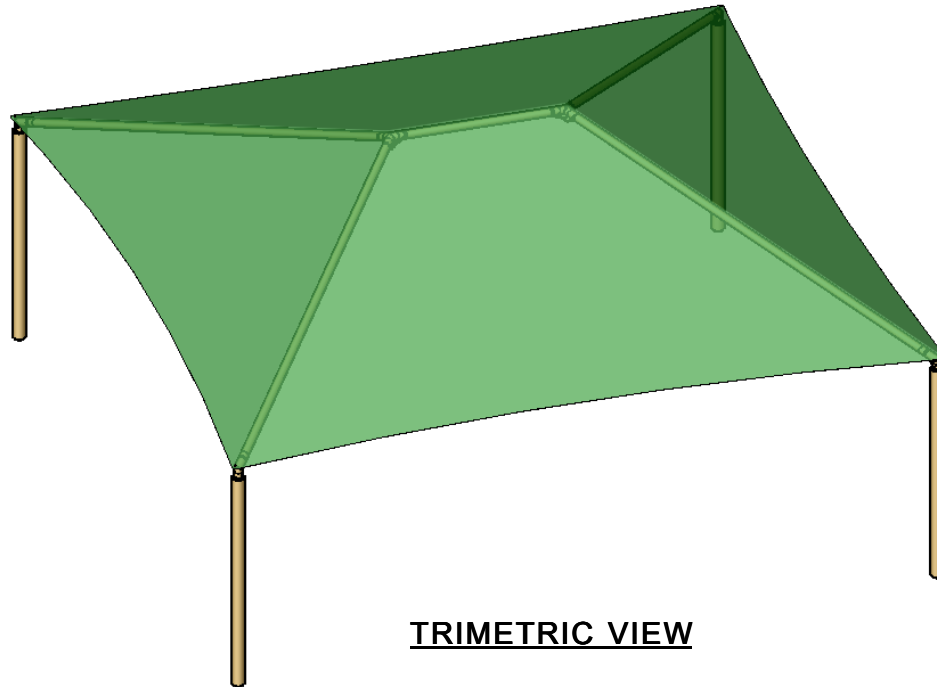
SD262612IN (Without Glide Elbows)



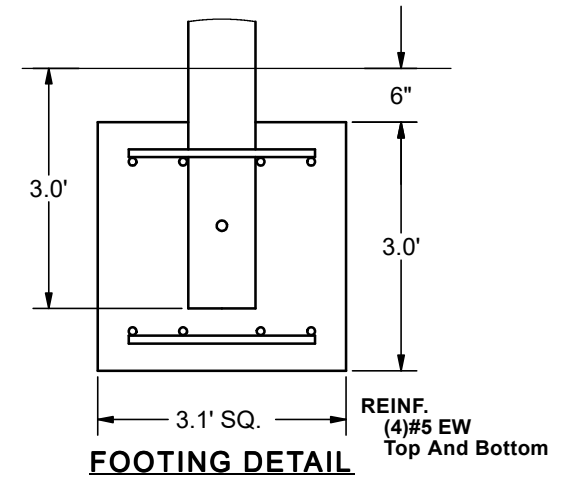
FRONT VIEW

SIDE VIEW

REF.#	PART DESCRIPTION	QTY.
1	Ø6.6"Capped Embedded Column	4
2	Angled Elbow	4
3	Ø3.5"Hip Rafter w/ Swaged End	4
4	Ø3.5"Ridge Pole w/ Swaged Ends	1
5	Square "Y" Connection	2
6	Fabric Cover w/ Cable Insert	1
7	Frame Hardware Kit	1



TRIMETRIC VIEW



FOOTING DETAIL

\*Footing design based on 1500 PSF soil bearing pressure.