

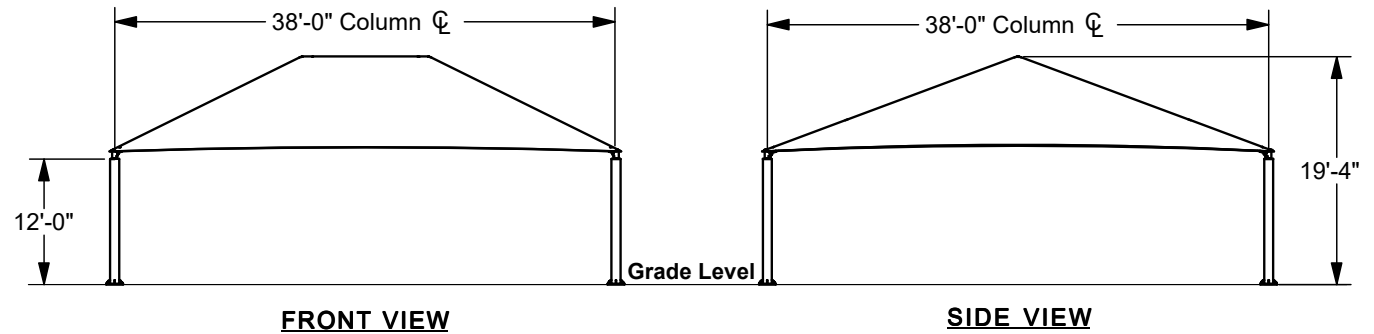
SQUARE HIP SHADE

**38' x 38' x 12'**

MODEL #:

SD383812SG (With Glide Elbows)

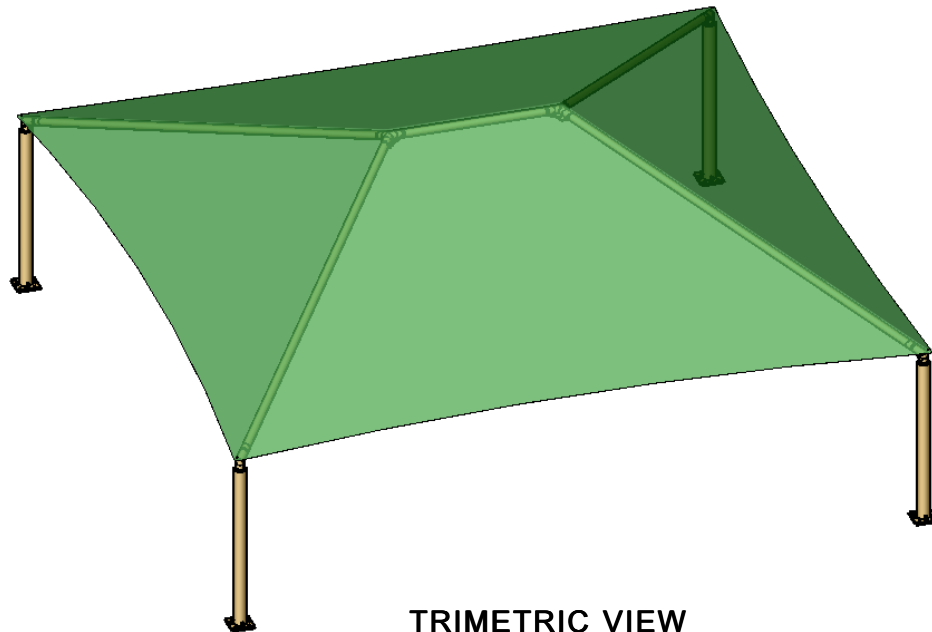
SD383812SN (Without Glide Elbows)



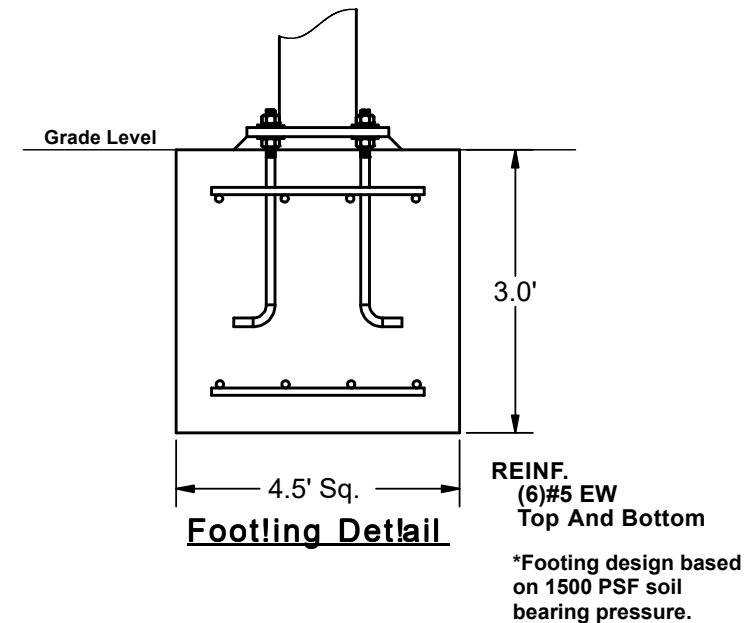
**FRONT VIEW**

**SIDE VIEW**

REF.#	PART DESCRIPTION	QTY.
1	10"x10" Capped Surface Mount Column	4
2	Angled Elbow	4
3	Ø5.0" Hip Rafter w/ Swaged End	4
4	Ø5.0" Ridge Pole w/ Swaged Ends	1
5	Square "Y" Connection	2
6	Fabric Cover w/ Cable Insert	1
7	Frame Hardware Kit	1



**TRIMETRIC VIEW**



SQUARE HIP SHADE

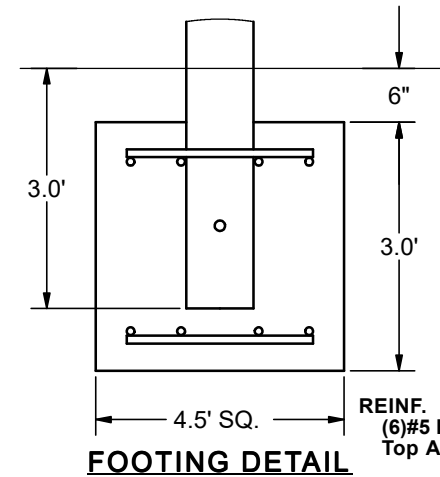
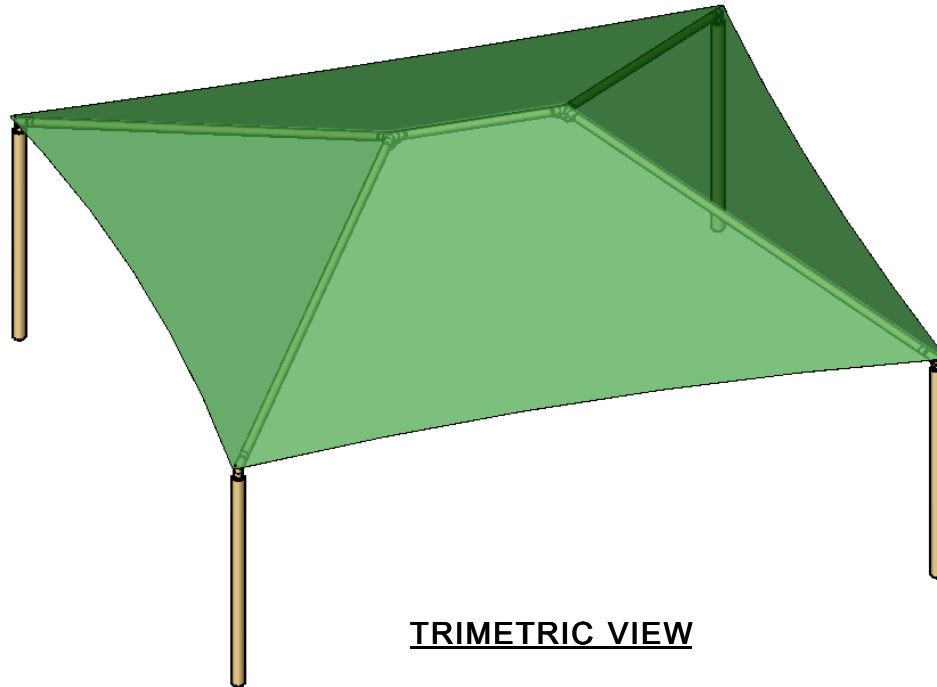
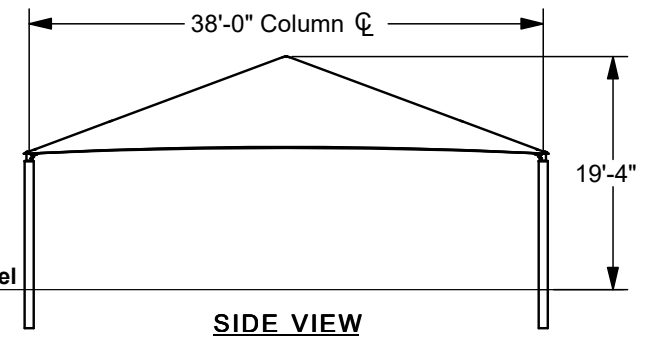
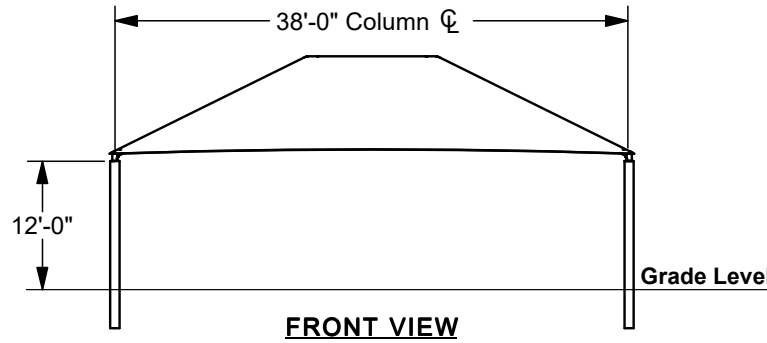
**38' x 38' x 12'**

MODEL #:

SD383812IG (With Glide Elbows)

SD383812IN (Without Glide Elbows)

REF.#	PART DESCRIPTION	QTY.
1	10"x10" Capped Embedded Column	4
2	Angled Elbow	4
3	Ø5.0" Hip Rafter w/ Swaged End	4
4	Ø5.0" Ridge Pole w/ Swaged Ends	1
5	Square "Y" Connection	2
6	Fabric Cover w/ Cable Insert	1
7	Frame Hardware Kit	1



\*Footing design based on 1500 PSF soil bearing pressure.