

USER GROUP: All Ages

RECOMMENDED CREW: 1 Person

TOOLS REQUIRED:

- T-30, TT-45 Torx, 3/16" Allen, 5/16" Hex, 3/8" Hex
- Level, Square, Wood Saw
- Auger / Post Hole Digger / Shovel
- Drill Bits: 7/32", 3/8"
- High Speed 3/8" Electric Drill with Clutch

NOTE: Use of any other driver may result in damage to tool and/or hardware!

NOTE: Apply Thread Locking Solution to ALL Non-Patched Hardware with Threads!

INSTALLATION TIME: 2 Hours

WEIGHT: 107 lbs.

CONCRETE REQUIRED: (2 or 3) 80lb. bags
(0.9 ft³ or 1.8 ft³)

NOTE: Concrete must have a minimum rating of 2,500 psi and must be mixed per manufacturer's recommendations.

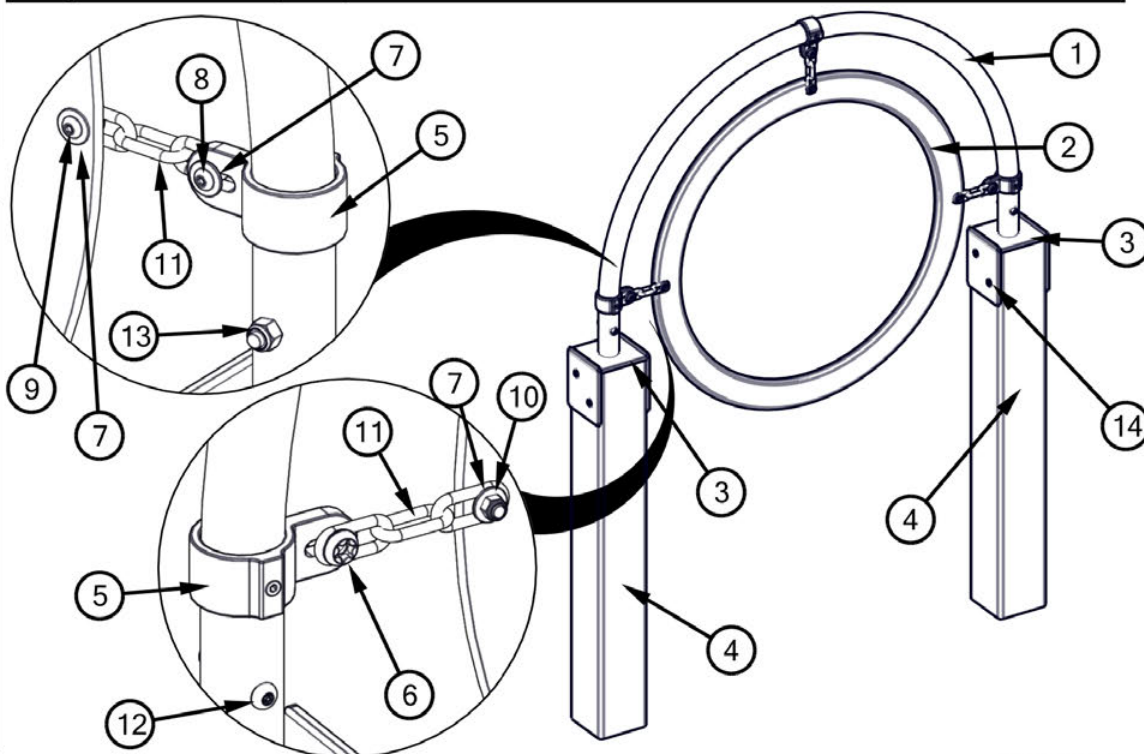
PRE-INSTALLATION CHECK:

Customer is responsible for verifying materials received by comparing received items with packing list. If any parts are missing or damaged, including documentation, contact your local sales representative immediately.

Supplier is not responsible for items discovered missing after 72 hours from time of delivery.

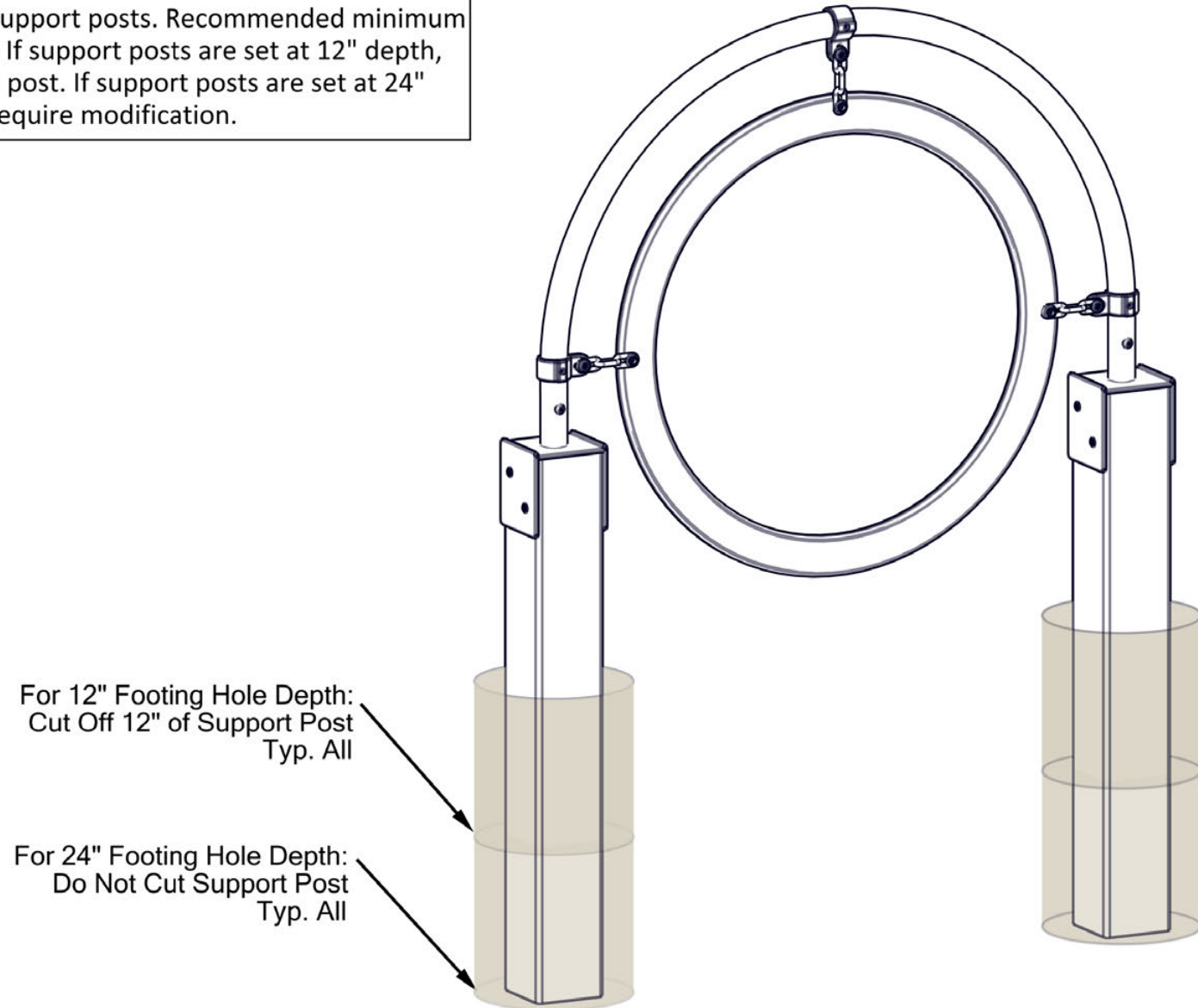
Before beginning installation, all installers must read and understand the Installation Introduction manual as supplied. If you did not receive a copy, or if you have any questions regarding any information in the Installation Instructions or this Installation Guideline, contact your local sales representative.

ITEM	Part No.	QTY	DESCRIPTION
1	FAB-35635XX	1	FAB - 1.9" OD x 11 GA Arch for R3 Dog Park (Coated)
2	RSP-4965XX	1	Sheet - Through the Target Disc
3	AFB-31432XX	2	Wldmt - 6" x 6" Post attachment for R3 Dog Park Arch
4	REP00345XX	2	Rec. Plastic - 6" x 6" x 42"
5	CF17EMO-8	3	Fitting #17EMO Tee/Ell Male w/Oval Slot - Coated
6	HWN0220	3	Nut - 5/16" - 18 x 3/4" S/S Barrel Button Six Lobe
7	HWWR0116	9	Washer 5/16" ID 7/8" OD Flat 316 SS
8	HWB0344	3	Bolt - 5/16"-18 x 3/4" ABH SS
9	HWB0352	3	Bolt - 5/16"-18 x 1-1/2" ABH SS
10	HWN0136	3	Nylon Lock Nut - 5/16" SS
11	H-50-5I	3	Galvanized, 5/0, Heavy Duty, Chain, Cut to 5"
12	HWB0233	2	Bolt - 3/8" x 2-1/2" Security Torx With Patch
13	HWN0098	2	Nylon Lock Nut - 3/8" SS
14	HWS0301	8	Screw - 5/16" x 3-1/8" RSS SS



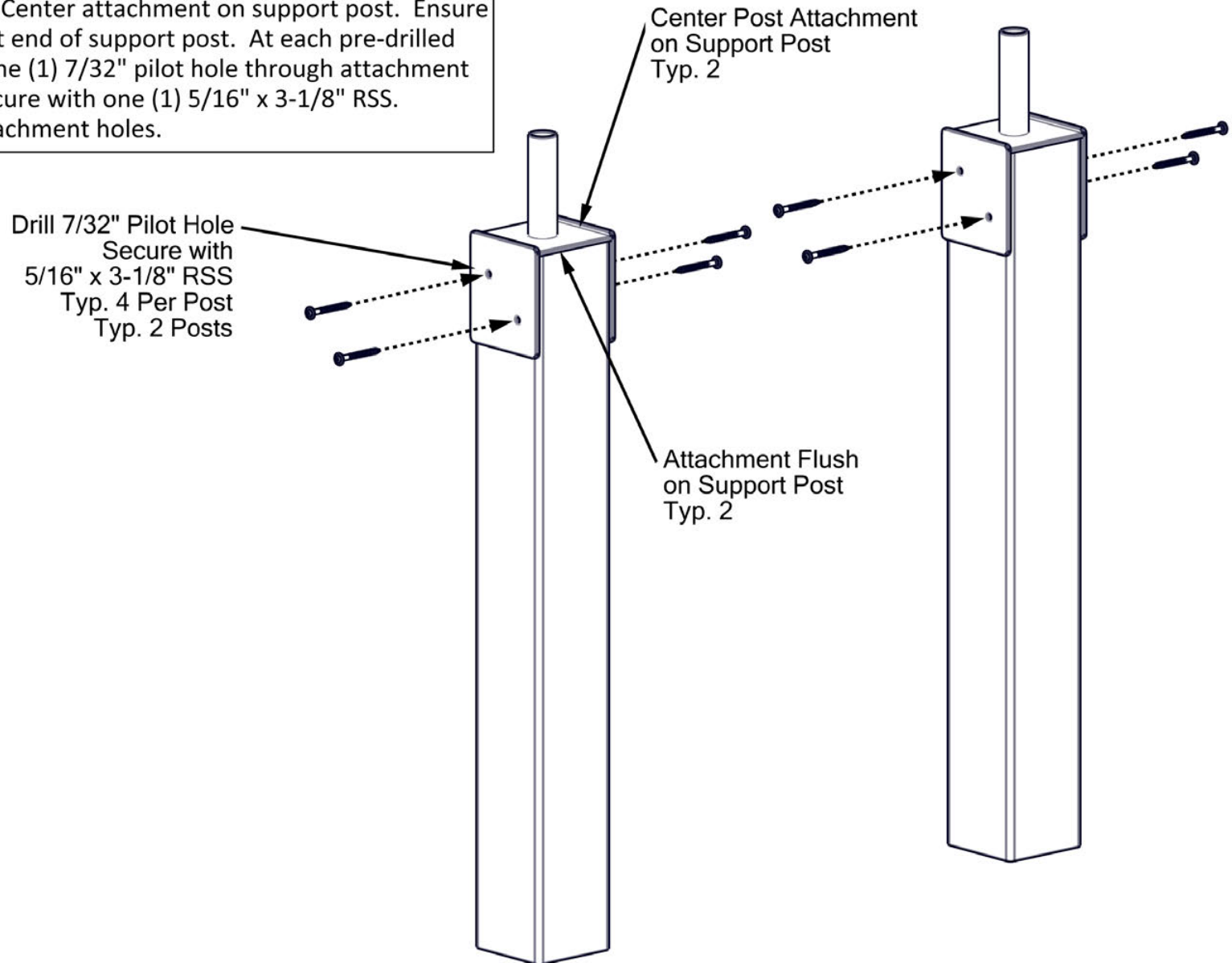
STEP 1

Determine depth for setting support posts. Recommended minimum depth of support posts is 12". If support posts are set at 12" depth, cut off 12" from each support post. If support posts are set at 24" depth, support posts do not require modification.



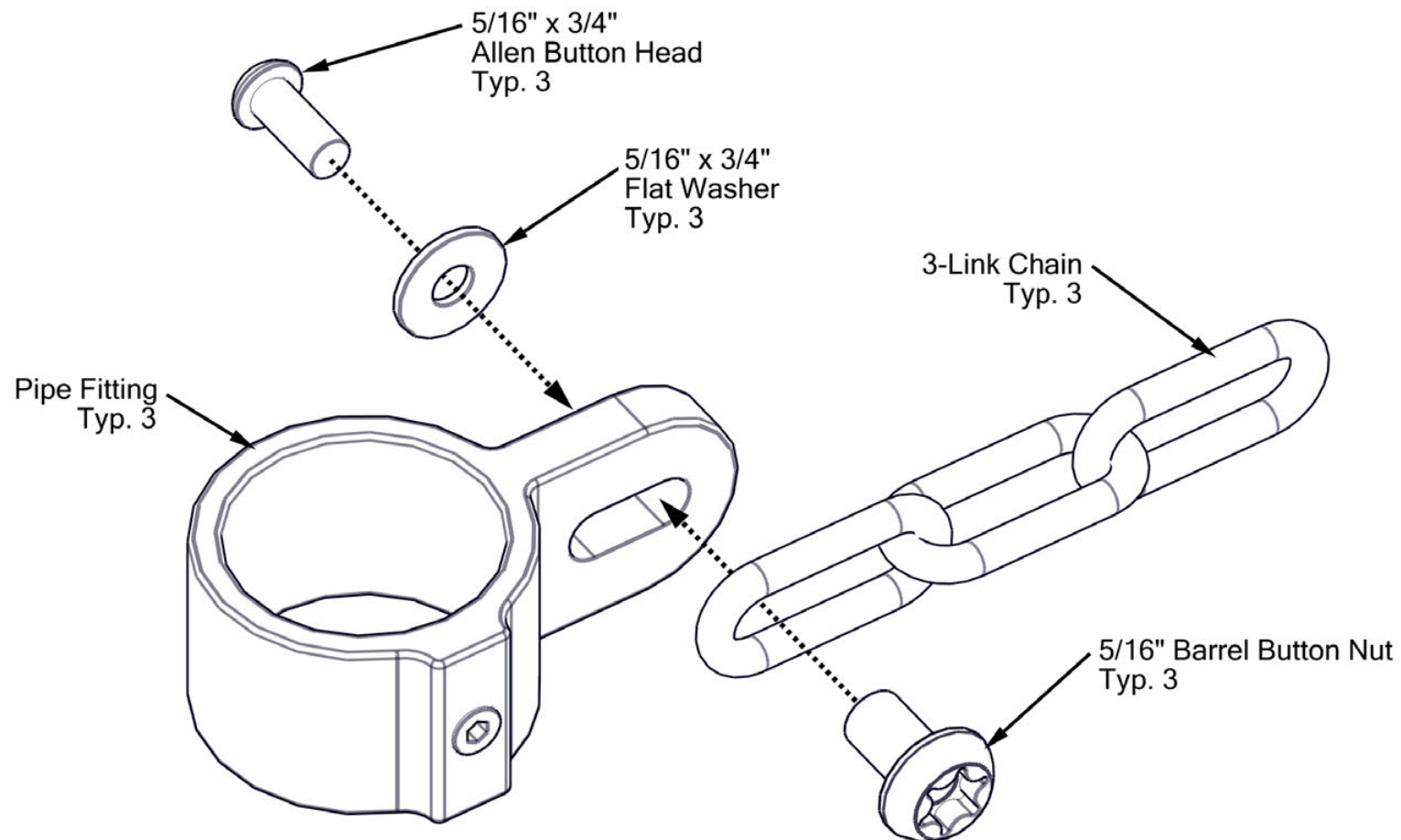
STEP 2

Mount posts attachments to support posts. Place post attachment over end of support post. Center attachment on support post. Ensure attachment is flush against end of support post. At each pre-drilled hole in attachment, drill one (1) 7/32" pilot hole through attachment and into support post. Secure with one (1) 5/16" x 3-1/8" RSS. Repeat for all eight (8) attachment holes.



STEP 3

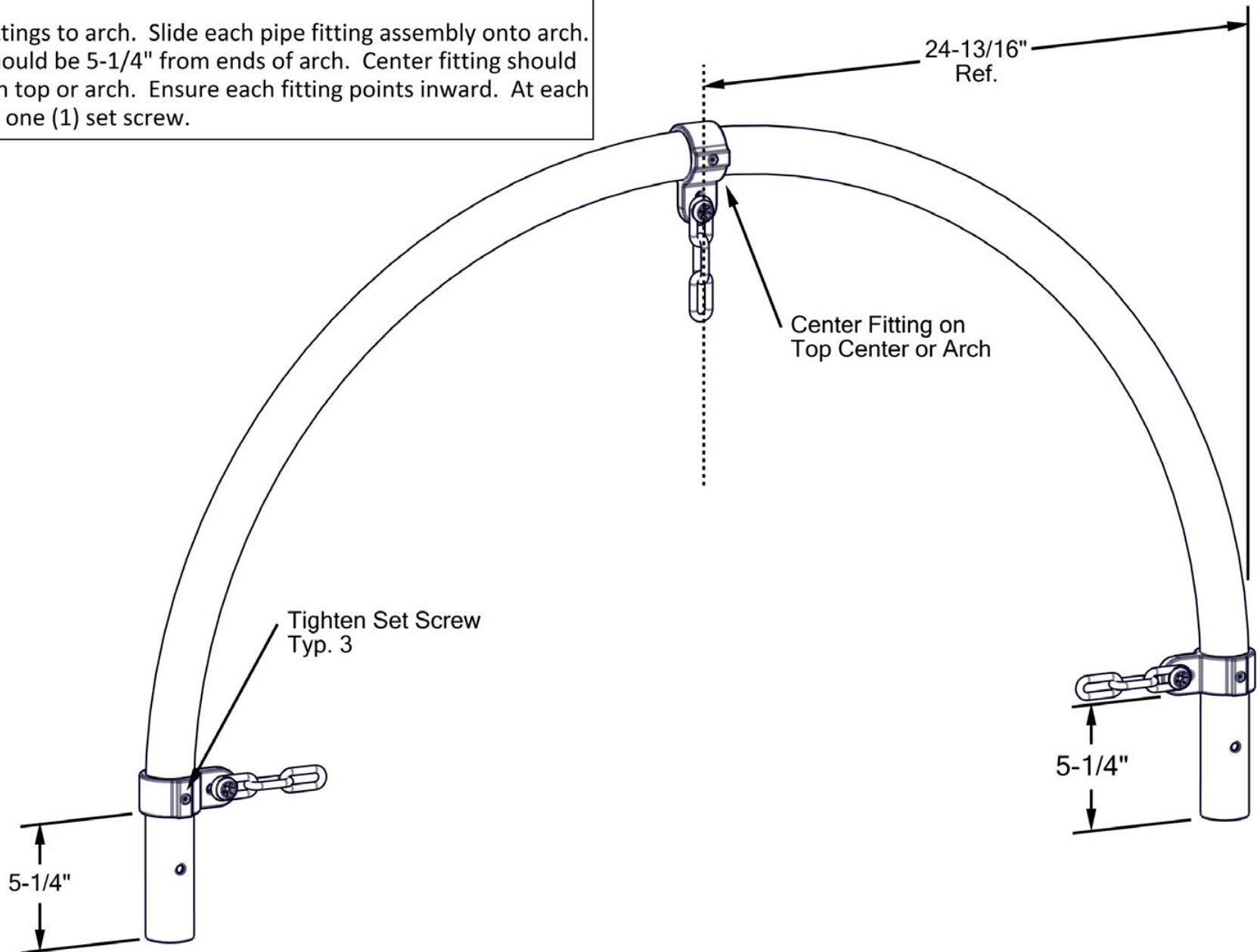
Mount chains to pipe fittings. For each fitting, mount one (1) chain using one (1) 5/16" x 3/4" Allen button head screw, one (1) 5/16" x 7/8" flat washer, and one (1) 5/16" barrel button nut. Repeat for each pipe fitting.



INSTALLATION GUIDELINE

STEP 4

Mount pipe fittings to arch. Slide each pipe fitting assembly onto arch. Side fittings should be 5-1/4" from ends of arch. Center fitting should be centered on top or arch. Ensure each fitting points inward. At each fitting, tighten one (1) set screw.

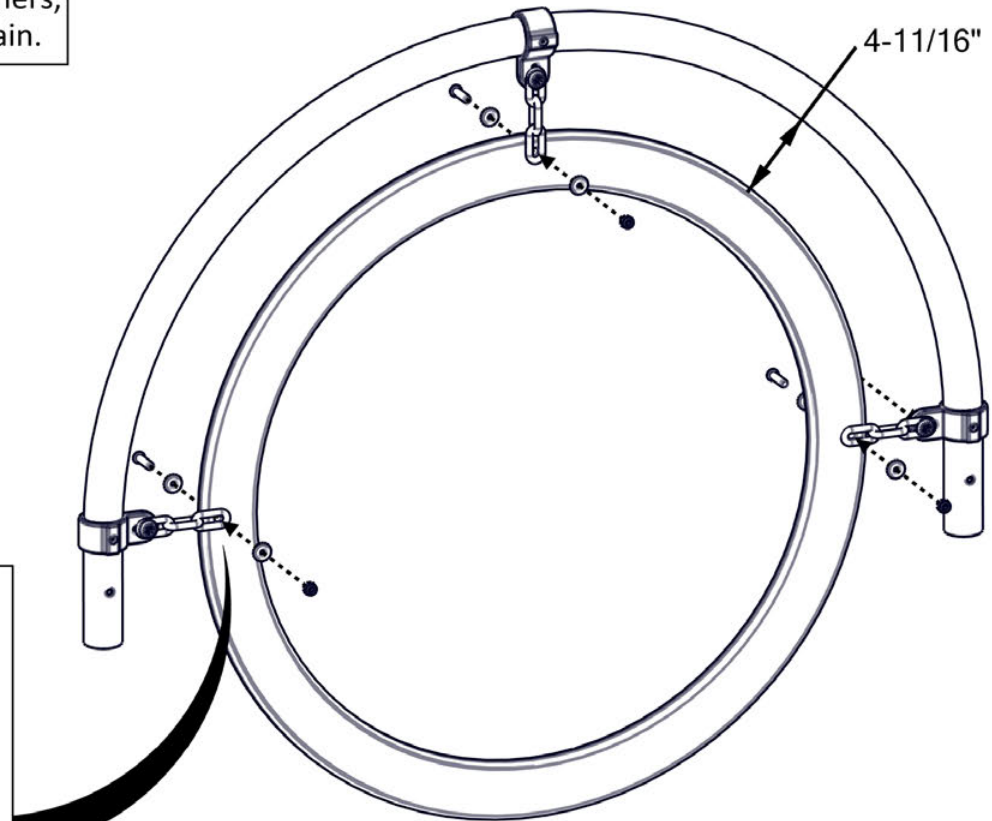
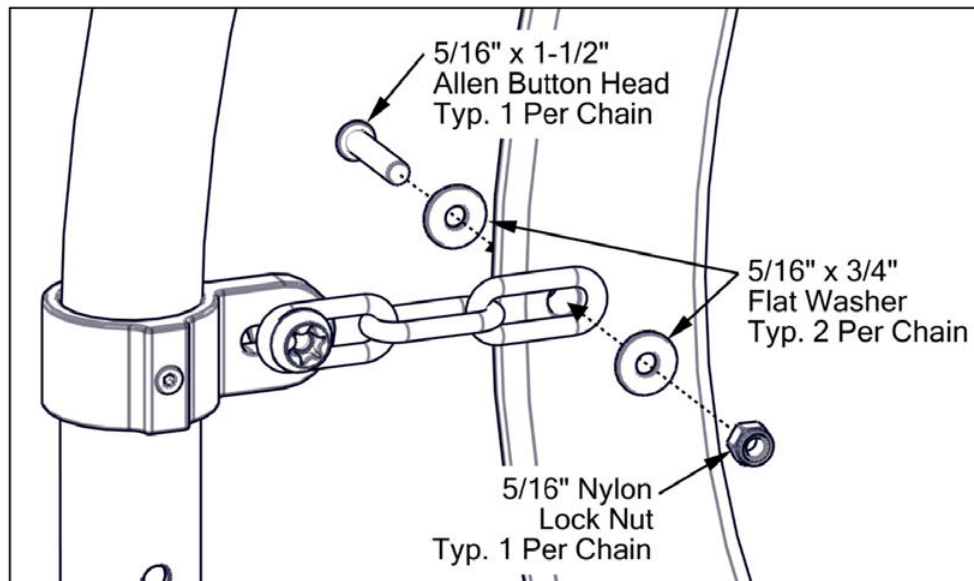


INSTALLATION GUIDELINE

STEP 5

Mount ring to arch. Center ring inside of arch. Edge of ring should be 4-11/16" from inside edge of arch. Secure chain to ring with one (1) 5/16" x 1-1/2" Allen button head screw, two (2) 5/16" x 7/8" flat washers, and one (1) 5/16" Nylon lock nut. See Detail 5-1. Repeat for each chain.

Detail 5-1

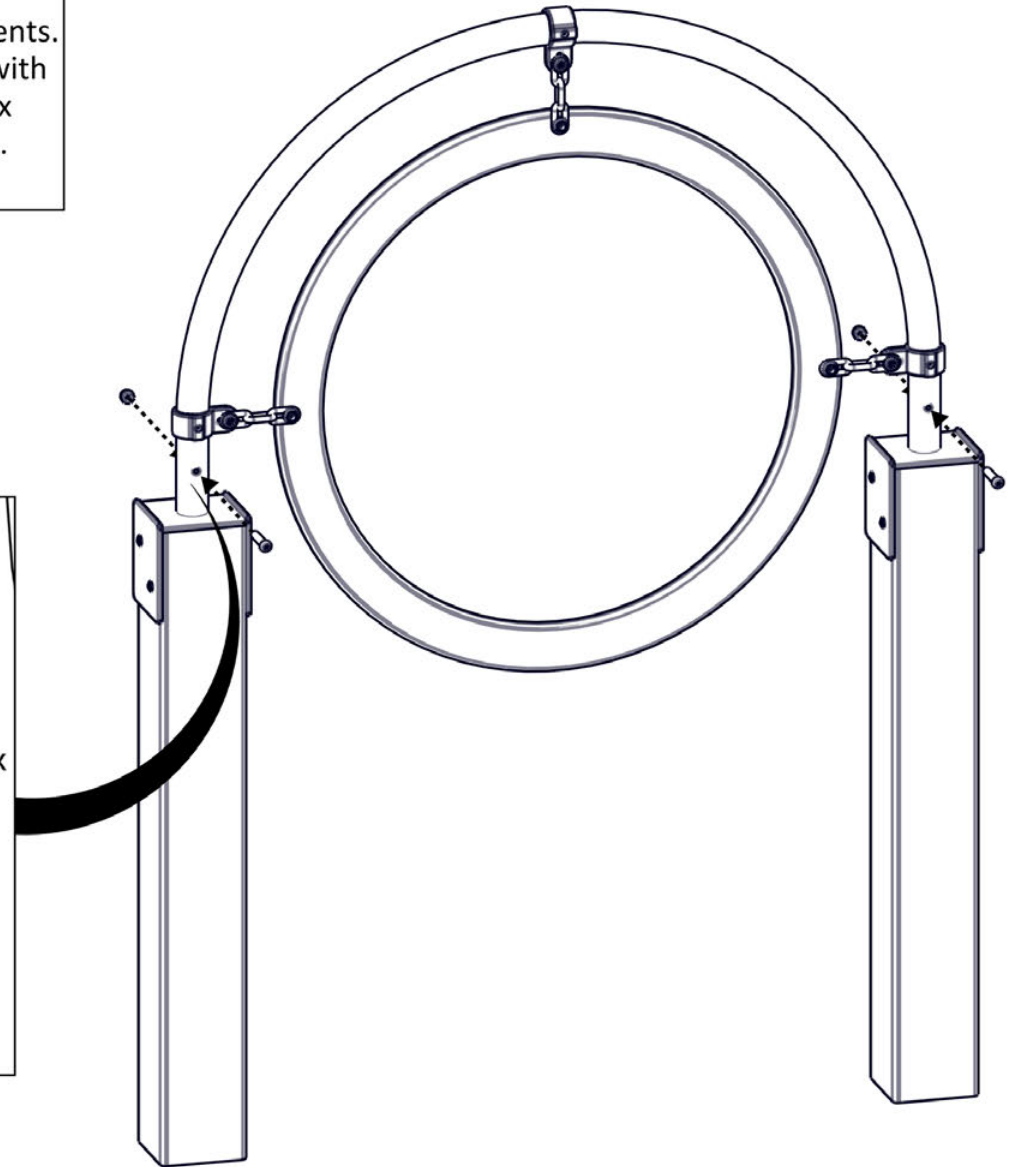
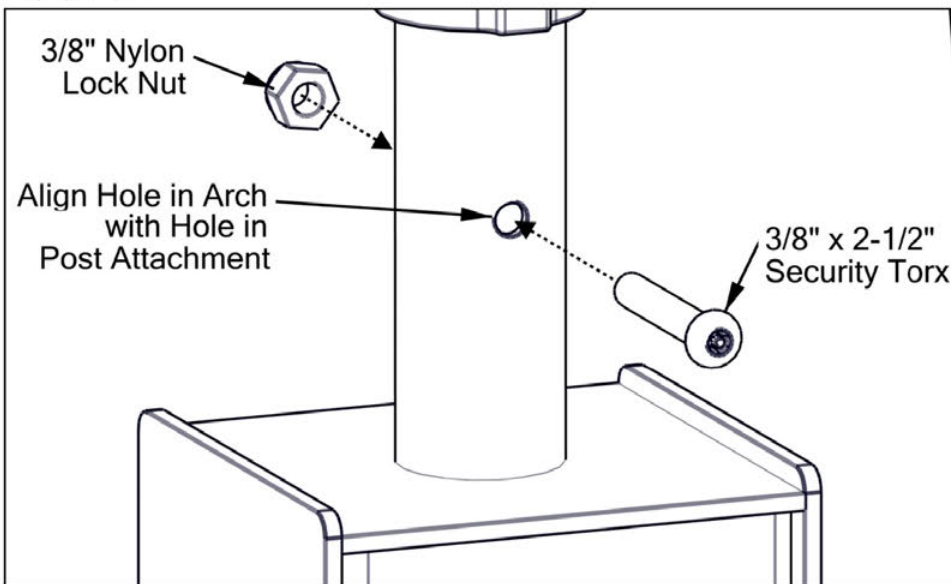


INSTALLATION GUIDELINE

STEP 6

Mount arch to support posts. Ends of arch slide over post attachments. Ensure arch is square with support posts. Align holes in arch ends with holes in post attachments. Secure each arch end with one (1) 3/8" x 2-1/2" security Torx and one (1) 3/8" Nylon lock nut. See Detail 6-1. Repeat for opposite arch end.

Detail 6-1



INSTALLATION GUIDELINE

STEP 7

Set support posts. Refer to site plan drawing and site elevation drawing for placement of all support posts. Installer is responsible for proper location of all support posts. Support post spacing is shown at right. Footing holes for support posts must be a minimum of 12" diameter and 12" deep. Footing holes should be 24" deep if support posts are not cut. Place assembly into footing holes and plumb. Fill each footing hole with concrete to within 3" from ground surface. Allow concrete to cure based upon manufacturer's instructions. Backfill each footing hole with dirt, flush with grade. See Detail 7-2. Installation is complete.

Detail 7-1

