



Furniture Leisure

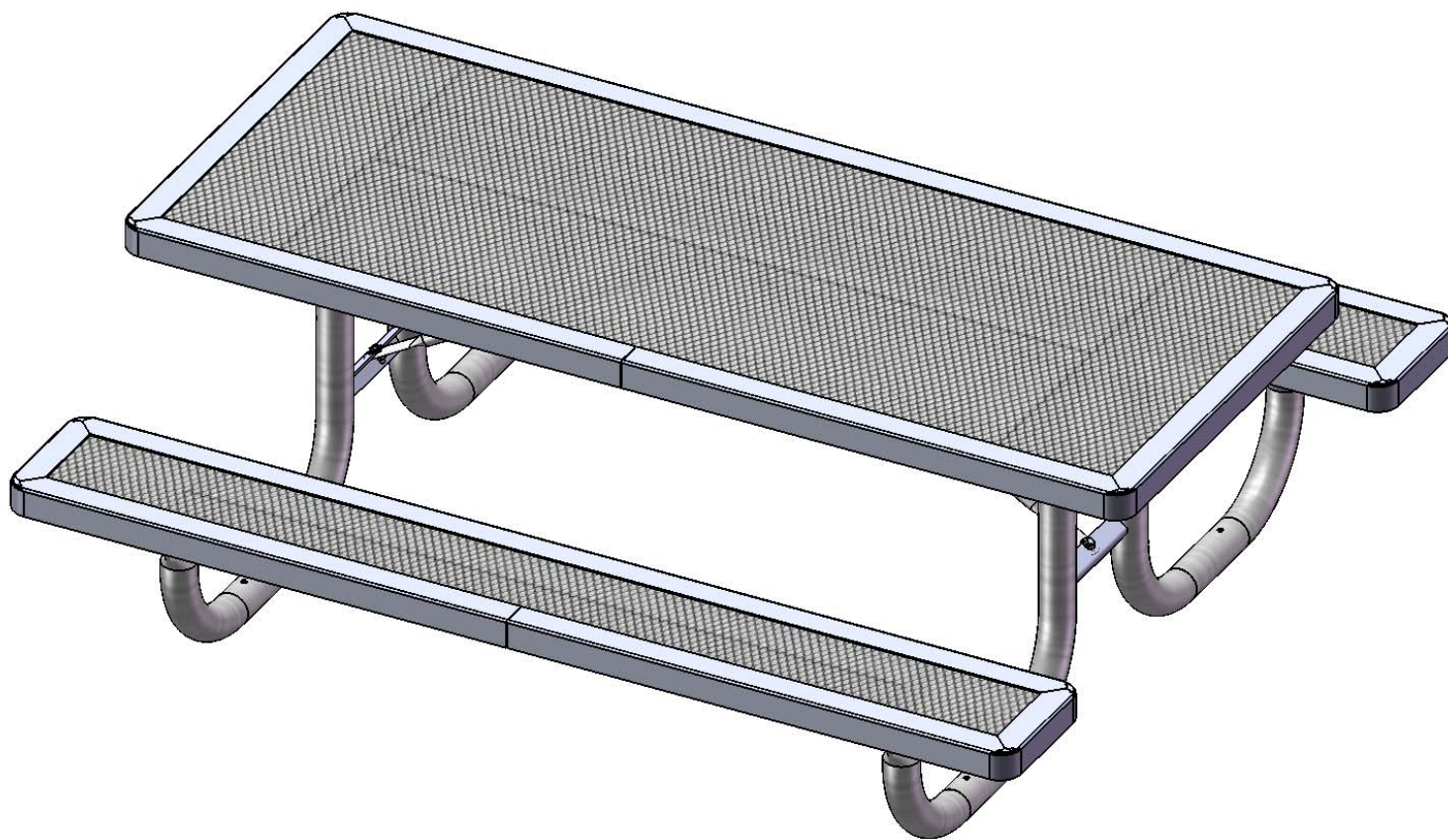
Commercial Site Furnishings

FurnitureLeisure.com PoolFurnitureSupply.com

PicnicFurniture.com PicnicTableSupplier.com

ParkTables.com UBrace.com

1-800-213-2401 | sales@furnitureleisure.com

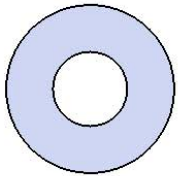


Model # T6RC-ELEM

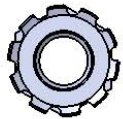
HARDWARE



5/16" x 1"
Machine Bolt



5/16" Washer



5/16" Washer

PRODUCT SPECIFICATIONS

T6RC-ELEM PRE-SCHOOL PORTABLE PICNIC TABLE WALK THROUGH DESIGN

Seat & Back: 2" x 2" x 1/8" formed angle frame with 1-1/2" radius corners. 3/4" #9 steel expanded metal. 7 gauge x 1-1/2" flat bar center support and mounting bracket understructure. Electrically MIG welded.

Coating: Oven fused functionalized polyethylene copolymer-based thermoplastic. Fluidized bed coating application with superior mechanical performance, impact resistance and UV-stability.

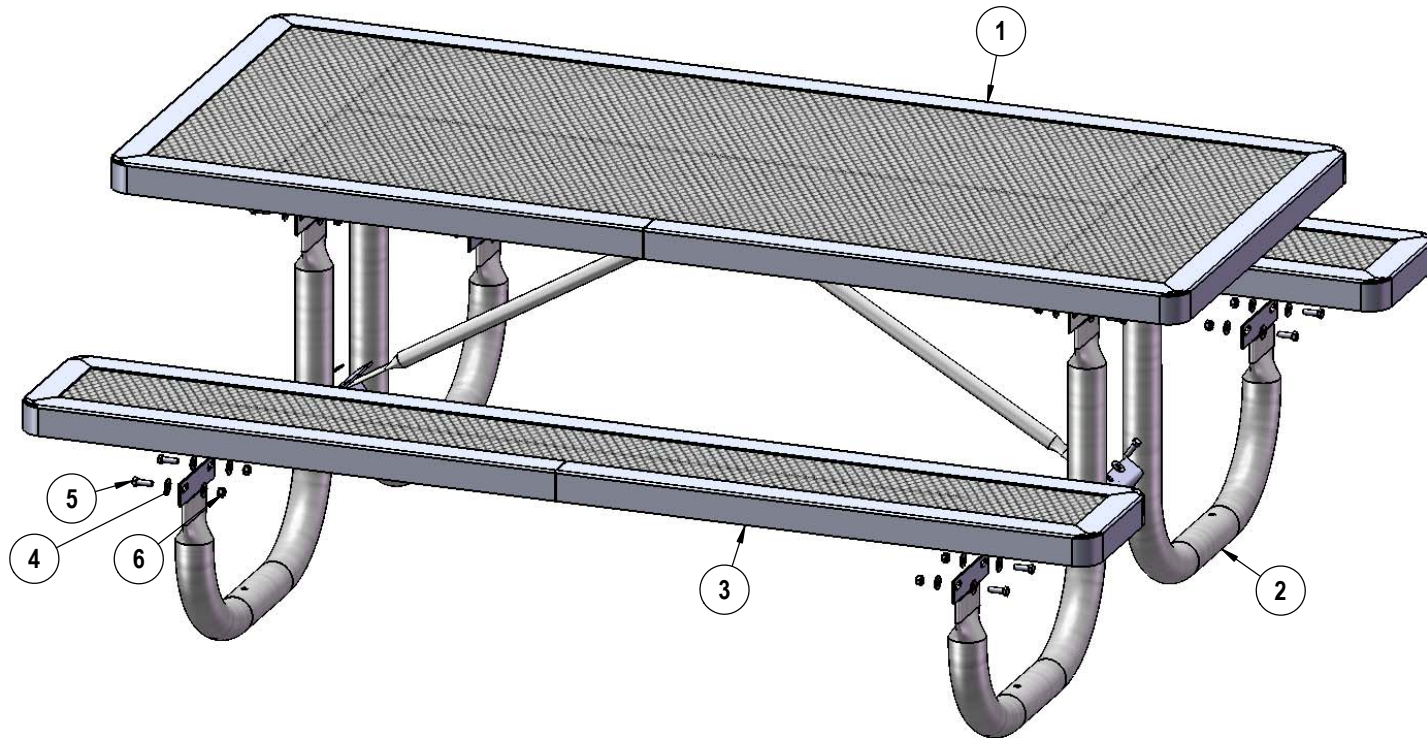
Frame: 2-3/8" O.D. x 12 gauge pre-galvanized structural steel tubing. Cross braces 1" O.D. x 16 gauge pre-galvanized structural steel tubing. Brace attachment points 1-1/2"x1-1/2"x3/16" steel angle. Seat and top mounting points 7 gauge x 1-1/2" die stamped steel flat bar. Legs are bent over a mandrel through the bend radius producing a wrinkle free bend. Holes are predrilled in legs for optional surface mounting. All electrically MIG welded.

Frame Coating: Electrostatic powder coated application oven cured.

Hardware: All stainless steel hardware fasteners.

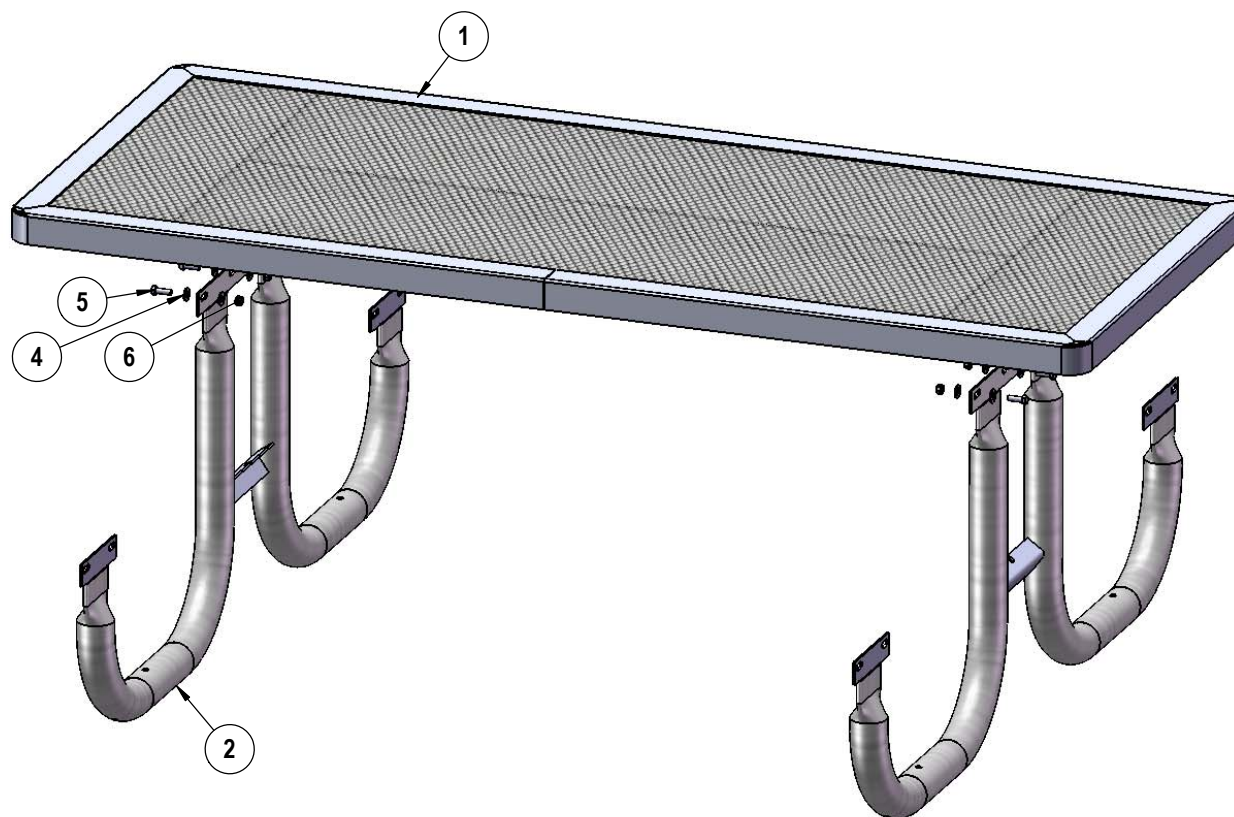
Dimensions: 6' pre-school portable picnic table walk-through design. Top is 30" wide x 72" long x 24-13/16" high. Seat is 10" wide x 72" long x 13-13/16" high. Outside to outside dimensions are 61-1/8" x 72".

COMPONENTS



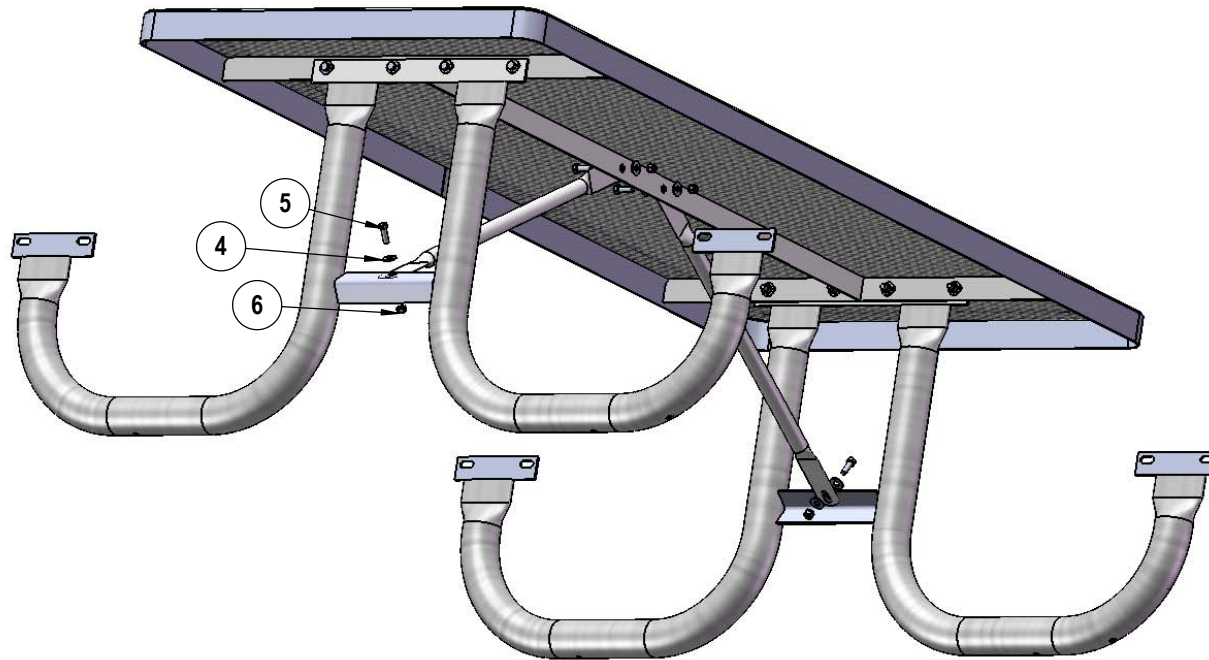
| ITEM NO. | PartNo | DESCRIPTION | QTY |
|----------|------------|--|-----|
| 1 | RC72-T | 6' regal expanded top | 1 |
| 2 | 04-01-0019 | 238 preschool vinyl frame | 2 |
| 3 | RC72-S | 6' long x 10" wide regal expanded seat | 2 |
| 4 | 33-02-0007 | 5/16" SS Washer | 40 |
| 5 | 33-05-0029 | 5/16" x 1" Machine Bolt (SS) | 20 |
| 6 | 33-03-0012 | 5/16" Kep Nut (SS) | 20 |
| 7 | 04-01-0021 | 27 7/8" vinyl table brace | 2 |

STEP 1



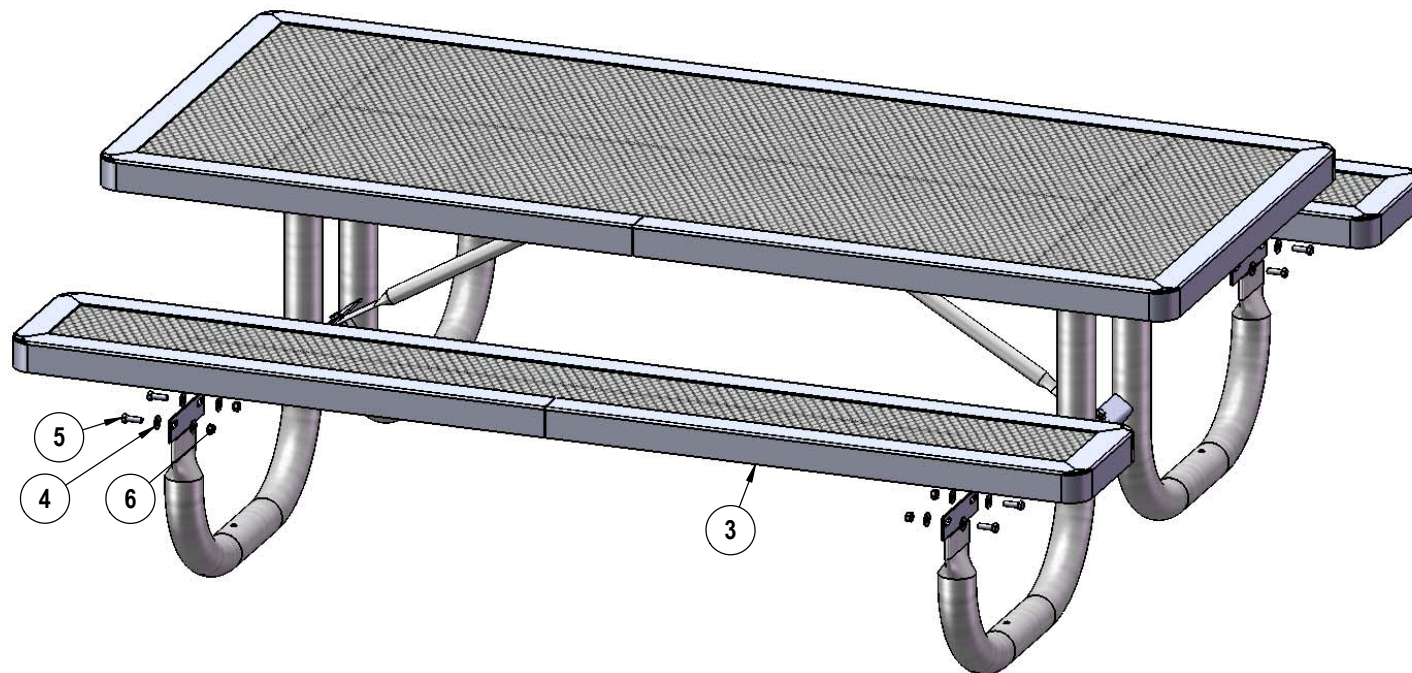
Attach the top to the top legs as shown using specified hardware.

STEP 2



Attach the braces to the frame and under side of the top as shown using specified hardware.

STEP 3



Attach the seats to the frame as shown using specified hardware.

OVERALL DIMENSIONS

